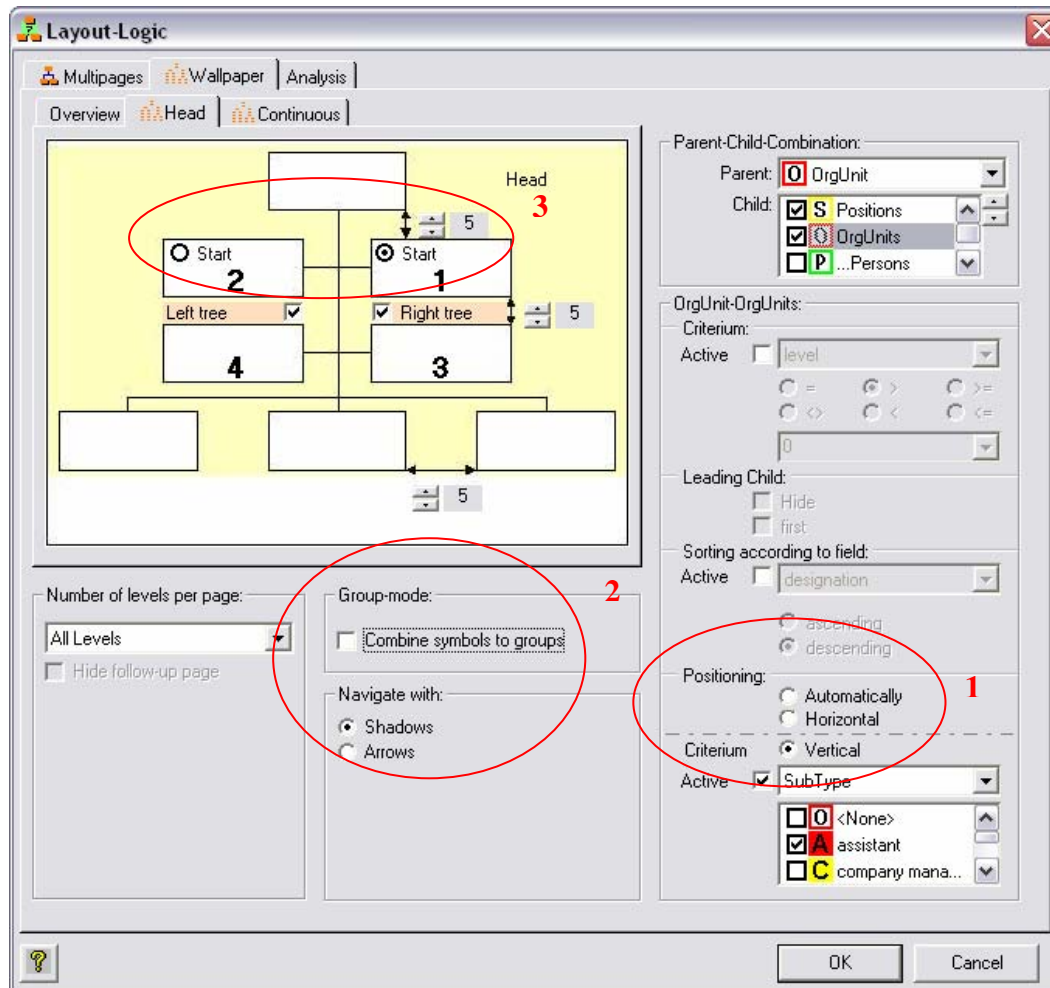


OrgChart 2.23

Changes in Layout-Logic



1

Staff-level also possible in Wallpaper-mode

Staff level layout can be configured in conjunction with a criterion by activating the option “Vertical”.

The “Positioning” can now be set also in activated group-mode.

2

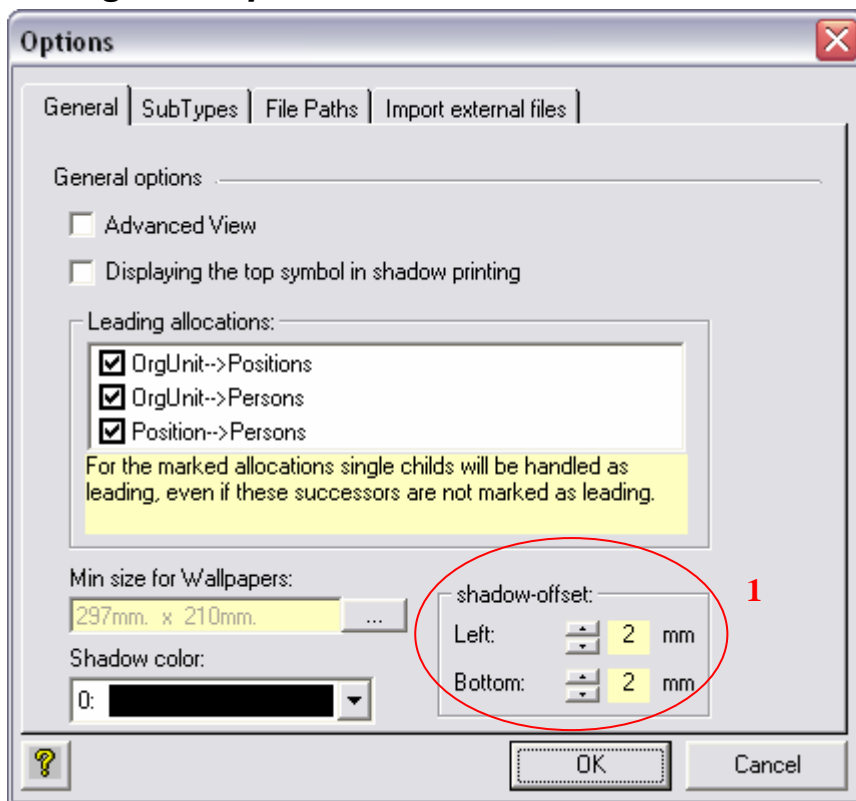
Navigating using shadows or arrows is now permanently selectable and not only anymore in activated group-mode.

3

Adjustable tree-sequence

When both trees are activated, the user can select from which tree side the process should start. Previously the process started automatically with the right tree side.

Changes in Options



1

Adjustable offset for navigation-shadows

The position of the shadow can be adjusted from -5mm up to +5mm. Standard values are defined as 2mm to the right and 2mm downwards. Both values can be set to “0” to create an Organizational Chart with invisible shadows. Saved in: Configuration

Diverse Changes

PowerPoint output

In the PowerPoint output the shapes are connected to each other using connectors. In this way the Organizational Charts can now easily be edited as the connecting line is now linked to the shape and moves with the shape. Also the shapes are now better grouped together – previously shapes with a link always had an invisible overlaying shape with that specific link. That in turn made it difficult to move shapes(by trying to move a shape, the invisible shape was always the first shape that was moved and so it was then necessary to conclude one more step to move the visible shape)

Autoimport-Dlls possible

Users with specific functions (if Menu point – Tools – Company Specific Functions is visible) can now automatically start these functions when a source file is opened. If you require this option, please contact us.

Supporting of gif Files

Photos and logos can be used in gif-format (alternatively to bmp and jpg-format)

Bugfixes

- In Visio the post text was added twice
- In Visio problems arose when the shapes were set to a height of "0".
- The Shape Editor was not compatible with systems that used a color setting of 256 colors. Because of this bug white areas have been displayed with transparent color.
- In the Trial Version vowels were also disabled in the Shape Editor.