

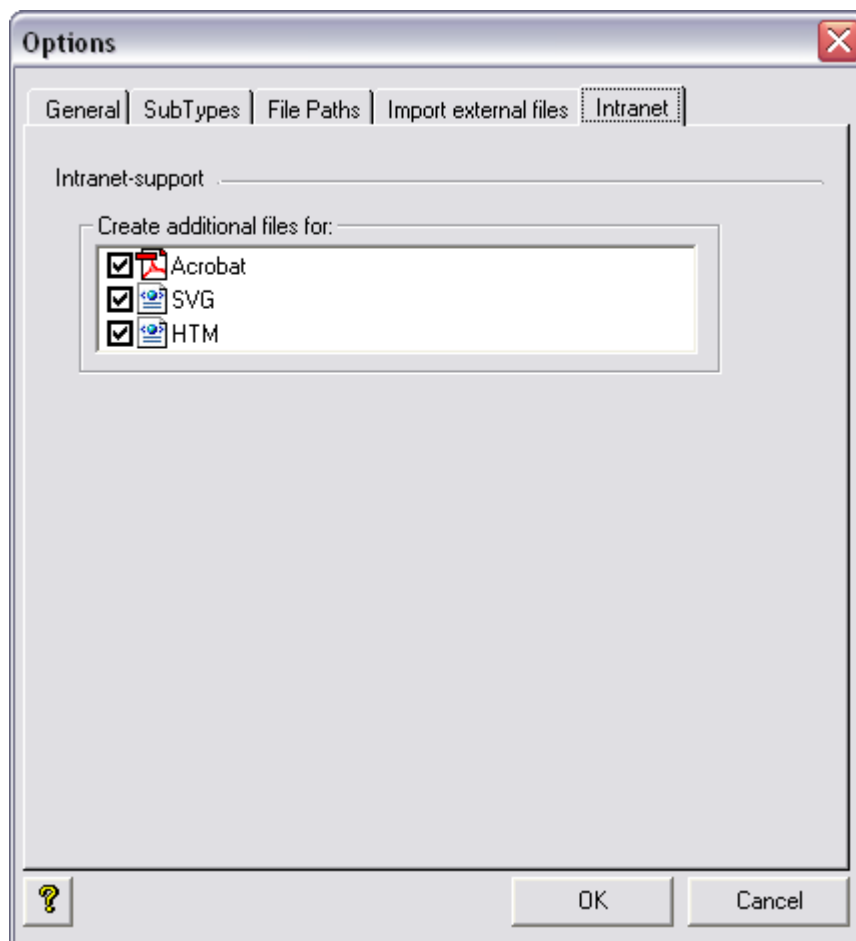
---

<b>INTRANET-OUTPUT</b>	<b>2</b>
SEARCH FEATURE	2
DISPLAYING EXTRA INFORMATION	3
EXAMPLE OF INTRANET OUTPUT	4
<b>LAYOUT LOGIC</b>	<b>5</b>
MULTI-SORTING	5
LEADING CHILD	5
WALLPAPER EXPLORER LOGIC	6
WALLPAPER ARRANGEMENT	7
<b>SEARCH FEATURE</b>	<b>8</b>
<b>SHAPE-EDITOR</b>	<b>8</b>
<b>LOGA VERSION</b>	<b>8</b>
<b>BUGFIXES</b>	<b>9</b>

## Intranet-Output

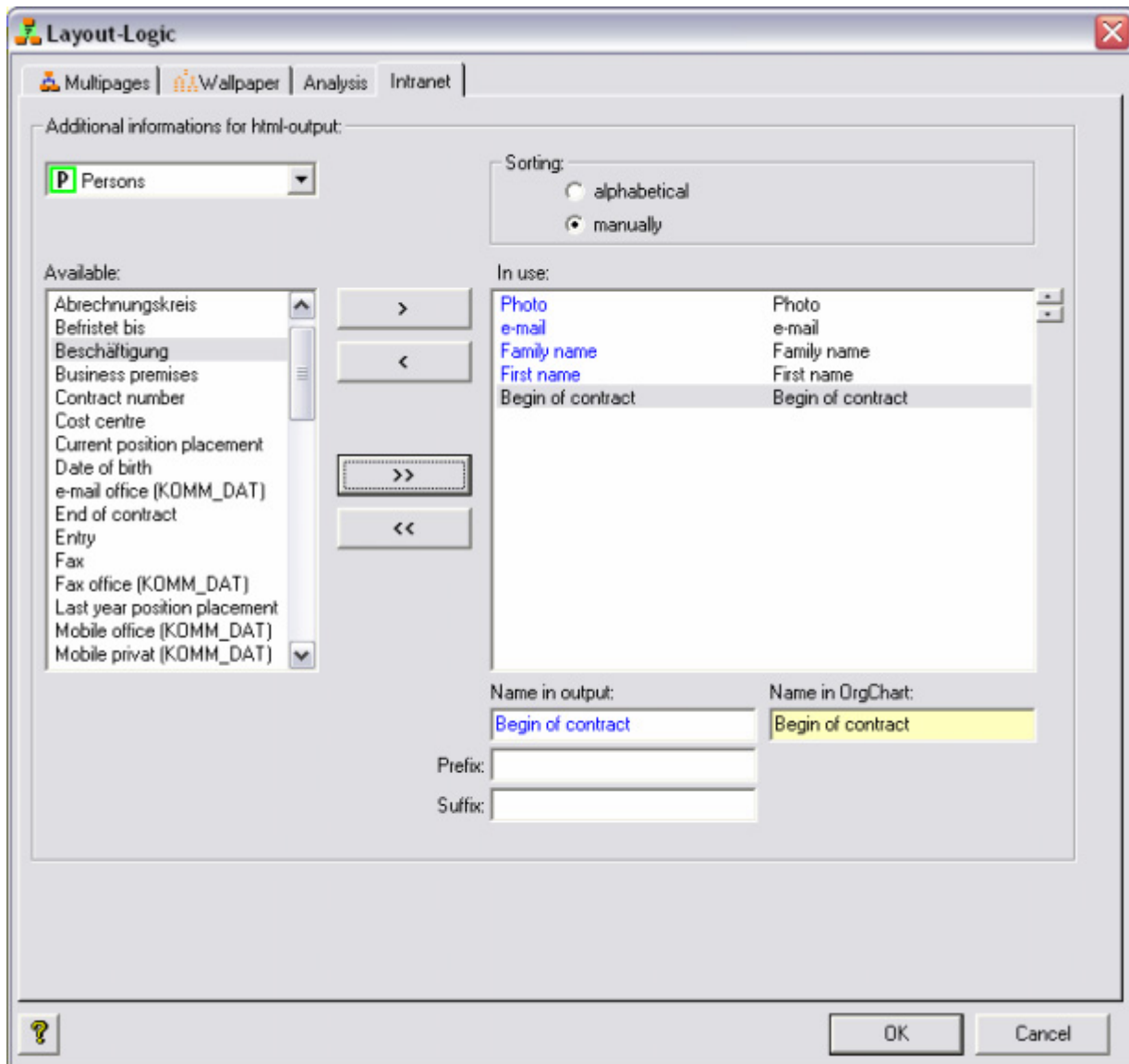
### Search feature

Up until now there was no search feature available for organisational charts that were released on the intranet. The production of necessary additional files for the different output variations can be activated in Tools-Options.



For publication in the Intranet, you can define what files you want to prepare with a search function. For the selected filetypes, additional xml-files will be produced, which can be parsed by using appropriate php scripts. An example of such a solution you can view on our website.

## Displaying extra information



These settings determine which information is available in the XML files. These settings will only affect the HTML output. Furthermore the intranet support must be activated for the HTML output. You can define which information you want to export for each object type . The properties can be renamed, prefix or suffix can be added and they can be sorted either alphabetically or manually. All the settings only affect the associated XML files. The changes are visible once the relevant file has been processed by a web server with the appropriate PHP scripts.

# OrgChart 2.30



## Example of Intranet output

The screenshot displays a web browser window showing an organizational chart for 'Bereich: PDW Software' as of 11.05.2010. The chart is structured as follows:

- Bereich: PDW Software**
  - Chief Executive Officer**
    - Chief Executive Officer
    - Chief Maker
    - Secretary
    - Michael Wilson
  - Chief Operating Officer**
    - Member of the Board
    - Ruby Development
    - Quality Assurance
    - Study Board
    - Consultant
    - Ruby Director
    - Secretary
    - Chief of Marketing
    - Secretary
    - Marketing Manager
    - Secretary
    - Secretary
    - Secretary
  - Chief Financial Officer**
    - Chief Financial Officer
    - Dr. George Key
    - Investor Relations
    - Marketing Manager
    - Secretary
  - Deputy Executive Officer**

On the left side of the browser window, there is a search bar labeled 'Suchen' (3) and a 'Person' profile for Michael Wilson (2). The profile includes the following details:

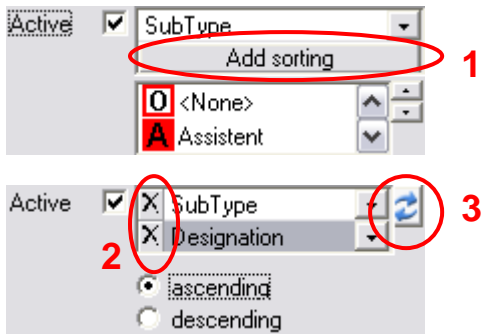
Vorname	Michael
Nachname	Wilson
E-Mail	<a href="mailto:Michael.Wilson@pdw-software.de">Michael.Wilson@pdw-software.de</a>
Adresse	Chicago
Fax	0511228887
Geburtsdatum	27.01.1973
Geburtsort	Atlanta
Personnummer	118023
Stellenbelegungsstatus	0
Adresse	Wilhelmstrasse 111
Telefon dienstl.	0511228887
Telefon privat	05112288765
Wohnort	New York

By clicking (1) a symbol, additional information can be seen on screen (2). Furthermore the search function (3) can search for all additional information (2) in all files of the published organisational structure.

## Layout logic

### Multi-Sorting

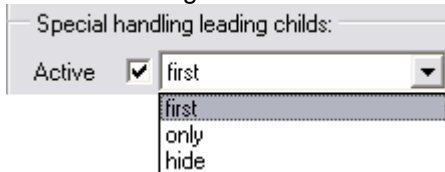
It is now possible to sort objects using 2 sorting settings. For example: OrgUnits must first be sorted according to a Subtype, but within the Subtype the OrgUnit must be sorted according to the designation.



- 1 – A further sorting criterium can be added.
- 2 – A sorting criterium can be deleted.
- 3 – The sorting order can be swapped.

### Leading Child

Up until now the leading child can be either hidden or be displayed at the first position  
Now the leading child also can be displayed only.

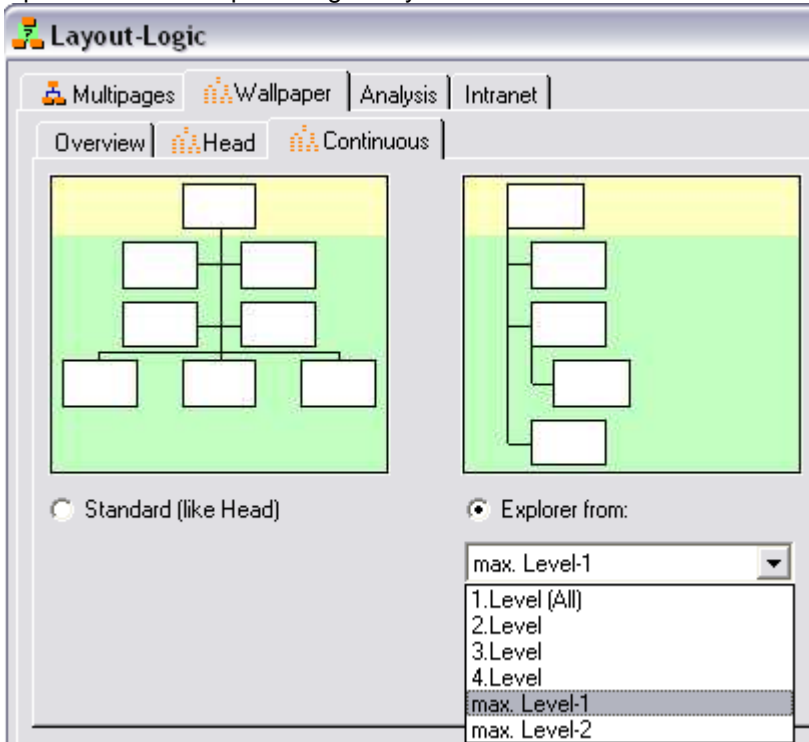


# OrgChart 2.30



## Wallpaper explorer logic

Up until now the explorer logic only could be started as of level 2.



Now it is possible to define the change to the explorer logic by activating the various levels.

The setting: 1. - 4. Levels are criteriums that count from the top to the bottom.

The setting max. Level-1 and max. Level-2 count from the bottom.

By smartly selecting the correct option it is possible to create wallpaper charts that take up less space. Which option is the best, depends on the structure of the dataset.

## Wallpaper arrangement

The provided logic has been changed. The changes apply by activated group logic.

Positioning:  
 Automatically  
 Horizontal

Criterion  
 Vertical

Active  Business premises

=     >     >=  
 <>     <     <=

Objects, whose child has the same type as itself, are referred to as **recursive** objects. For example: OrgUnits are recursive as they can have underlying OrgUnits assigned to them. All recursive objects inevitably create their own group.

The changes apply to **non-recursive** objects (e.g. Positions or Persons):

### Up until now:

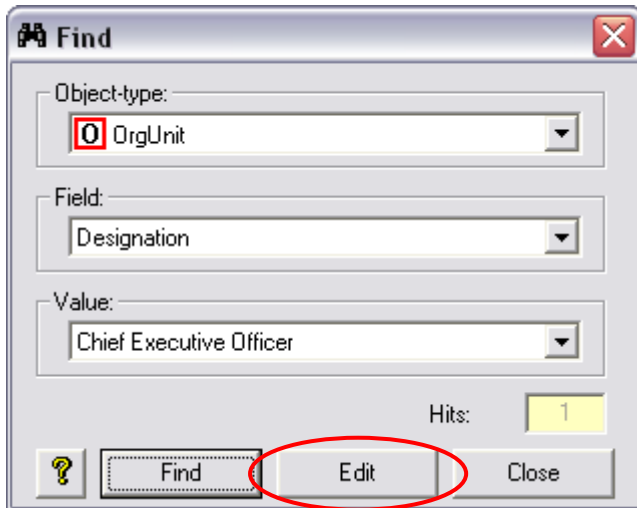
**Vertical:** created a new group inevitably.

**Horizontal:** had no effect.

### New:

**Vertical** or **horizontal:** inevitably creates a new group if the above object also creates its own group. For example: positions could be removed out of the OrgUnit group and creates a group for itself.

## Search feature



2 Changes have been made concerning the search functions:

- 1.) The last search parameters that were entered are now always saved as the default and are recalled when the search function is activated again.
- 2.) To edit a found object it is not necessary to close the search mask anymore. A direct edit of the object is now possible using the **Edit** function. Following the edit, the search function can be continued.

## Shape-Editor

The maximum size of shapes is now 10 x 10cm (previously 8 x 8cm)

## LOGA Version

For each object type there are now 10 user text fields and 10 user number fields available (previously 5).  
New function for persons (in the Shape-Editor): "Title" "name extension + name", "first name"



# OrgChart 2.30



---

## Bugfixes

When creating an organisational chart in the wallpaper format, using the group settings, both trees activated and the symbols are to be displayed vertically, it could happen that the shapes would superimpose each other.

When creating an organisational chart in the wallpaper format using the vertical logic, symbols could overlap the connecting lines of its neighbours.