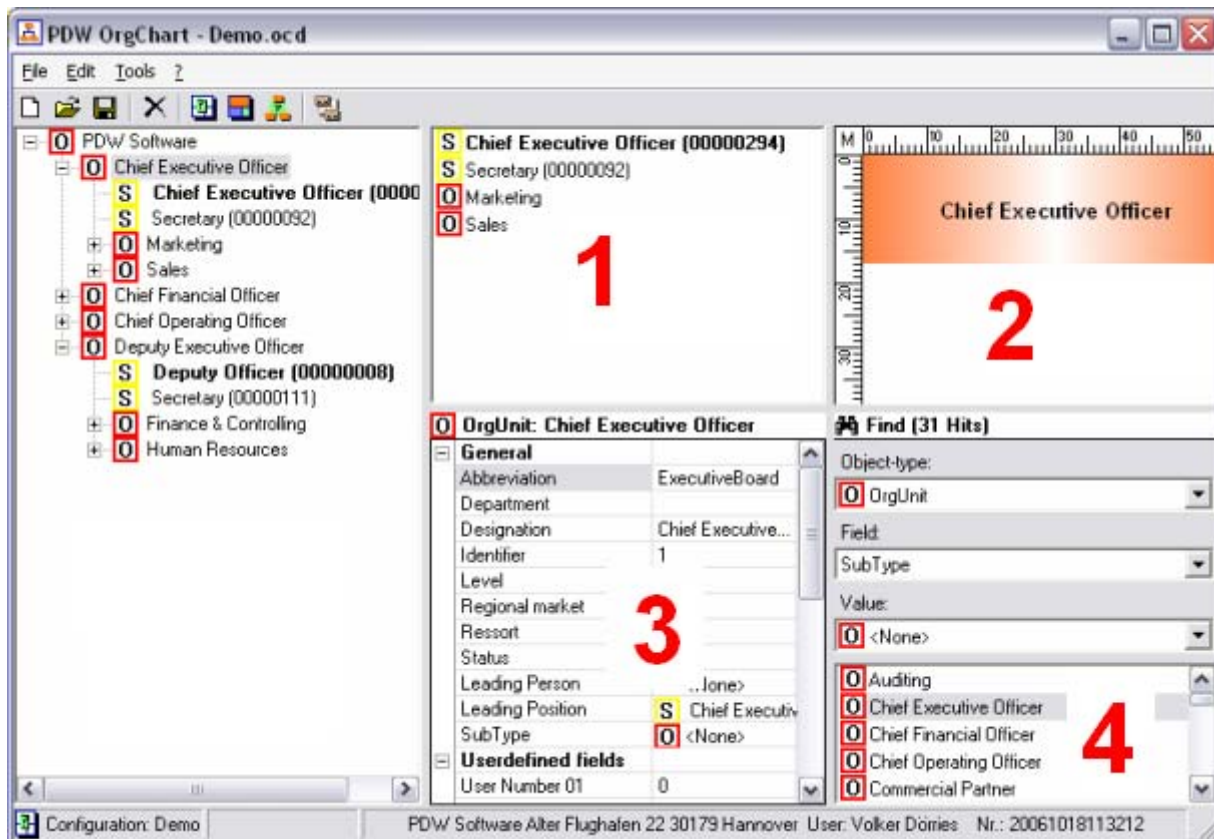


<b>CHANGED USER-INTERFACE</b>	<b>2</b>
LISTVIEW	2
PREVIEW	2
PROPERTY-WINDOW	2
SEARCH-WINDOW	2
<b>BUGFIXES</b>	<b>3</b>
TOOL „PROPERTIES“	3
CONFIGURATIONS	3
PDF-OUTPUTS	3

## Changed user-interface



### Listview (1)

Up until now:

List of associated persons

New:

List of all child-elements, simplifies changes in the structure by Drag-and Drop.

### Preview (2)

Shows a preview of the selected item. The symbol is shown as it will look in the organizational chart, means that an undefined subtype is shown with the default-symbol, in the editor the empty symbol is shown as before.

### Property-window (3)

All properties of the selected item are shown and can be edited directly.

### Search-window (4)

Shows all hits from the last search. Selecting an item from this list causes the selection of this item in the navigation-window and therefore displaying the current properties and preview.

## Bugfixes

### Tool „Properties“

Changing dates by a criterium wasn't possible.

### Configurations



Changing the state of write-protection caused an error on some computers.

### PDF-outputs

By using some codepages (e.g. czech) the attributes „**Bold**“ oder „*Italic*“ didn't work, means in the output these strings have been displayed only with the standard-font without these attributes.